

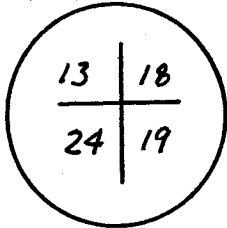
RECEIVED
LARAMIE COUNTY
CHEYENNE, WY.

CERTIFIED LAND CORNER RECORDATION

'86 MAY 16 PM 2 32

R-67-W R-66-W

DESCRIPTION OF CORNER EVIDENCE FOUND, AND ORIGINAL RECORD (If known)

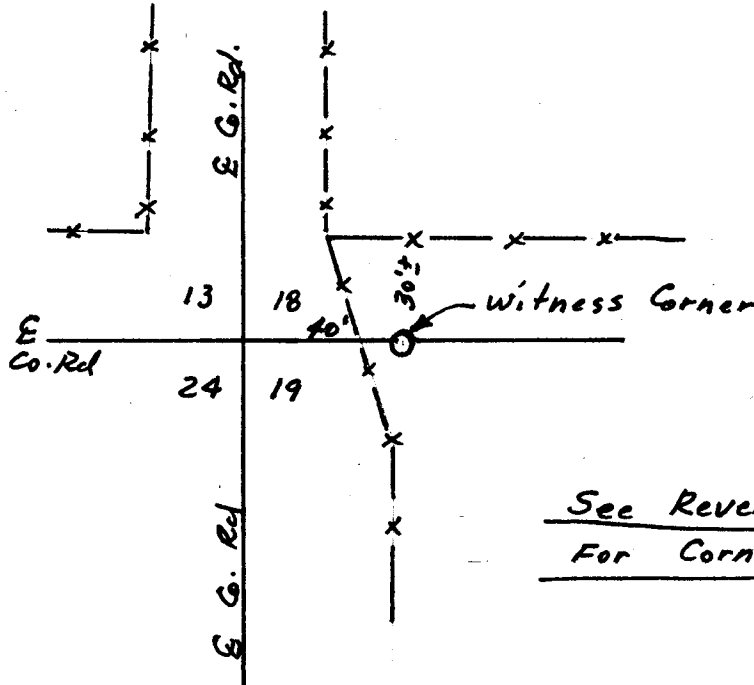


T
16
N
Original Monument Lost To County Road Construction.
Center Lines of County Roads West, North and South
were used to Restore Corner Location.
Original Monument Described as a Granite Boulder
20" x 10" x 10".

DESCRIPTION OF MONUMENT AND ACCESSORIES ESTABLISHED
TO PERPETUATE THE ORIGINAL LOCATION OF THIS CORNER:

Set a 2" x 24" Galvanized Iron Pipe with an
Aluminum I. D. Cap as Witness Corner 40' East
and on Section Line East. Did not set a
monument at Corner Location in County Road.

SKETCH, WITH COURSE AND DISTANCE TO ADJACENT CORNER IF DETERMINED IN THIS SURVEY.
(May Sketch or Paste Reproduction on Reverse Side.)



See Reverse Side
For Corner Ties.

I, Edward C. Fry certify that I have carefully performed or reviewed the work done on the diagrammed corner as reported on this recordation form and approve the same.

Edward C. Fry 4-23-86 P.E.L.S. 662
Signature of Surveyor Registration No.

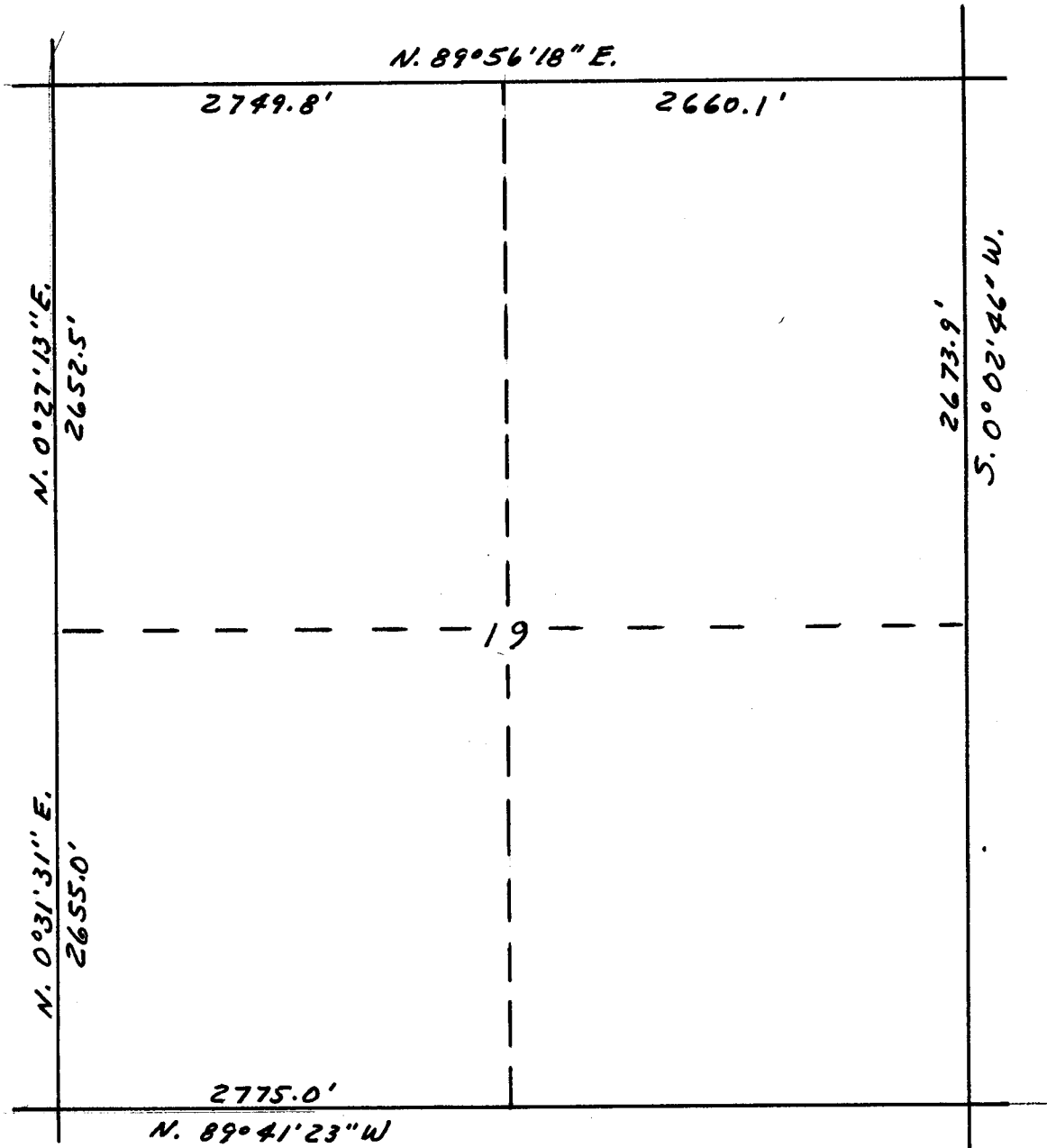
STATE OF WYOMING,
Office of Clerk and Recorder,
County of Laramie

This "corner record" was filed for record on the 16 day of May, 1986, was noted on the cross-index plat and is assigned page No. _____, in book No. _____.

Joseph E. Hitchcock
County Official

Cross Index No. N-1 T. 16 R. 16p Mer.
 _____ T. _____ R. _____ Mer.
 _____ T. _____ R. _____ Mer.
 _____ T. _____ R. _____ Mer.
 _____ T. _____ R. _____ Mer.
 _____ T. _____ R. _____ Mer.
 _____ T. _____ R. _____ Mer.

R-66-W



T
16
N

